

# ONE

ICONIC ADDRESS













ONE





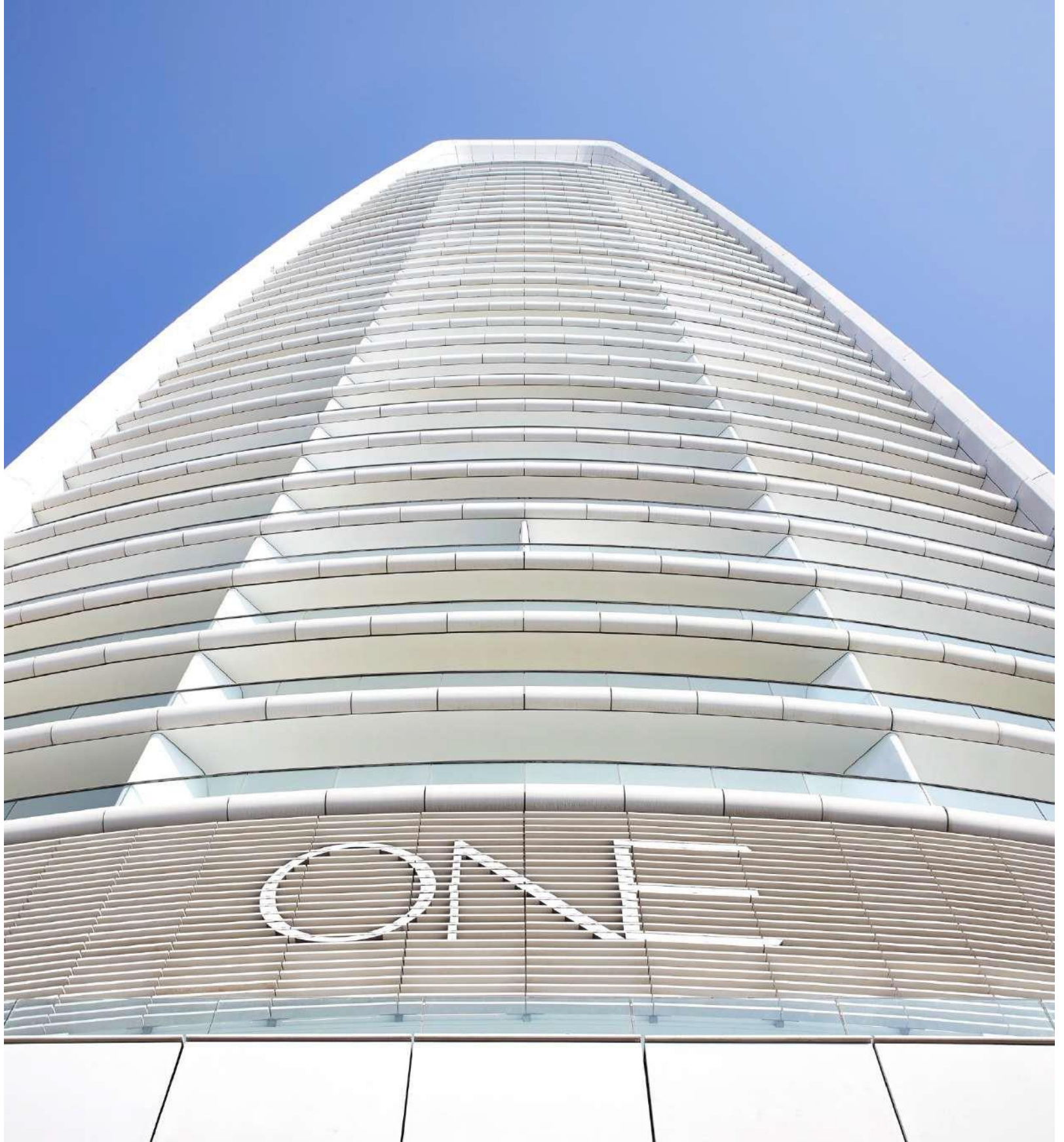
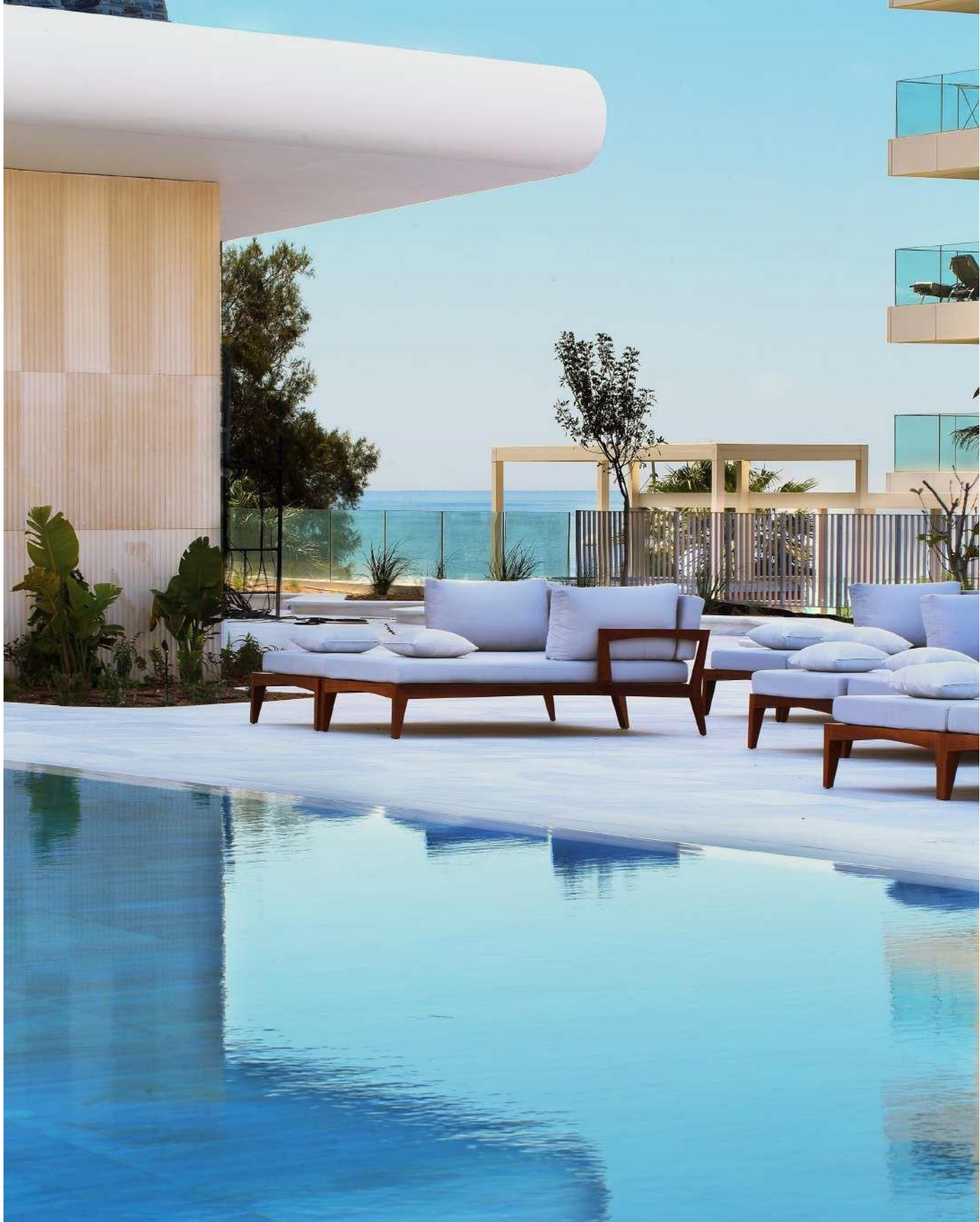
















ENTRANCE





ENTRANCE



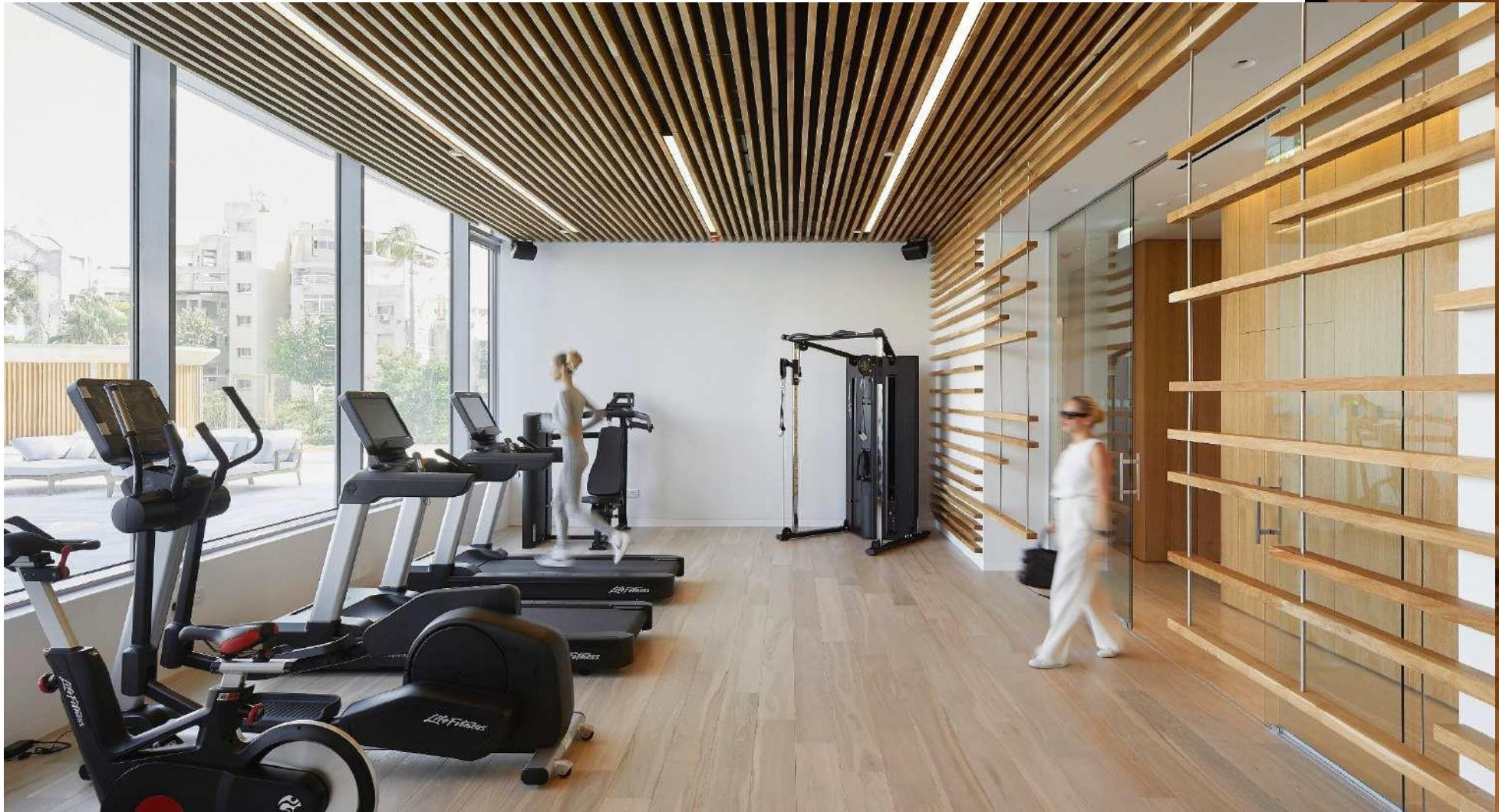


LOUNGE









EXCLUSIVE FACILITIES



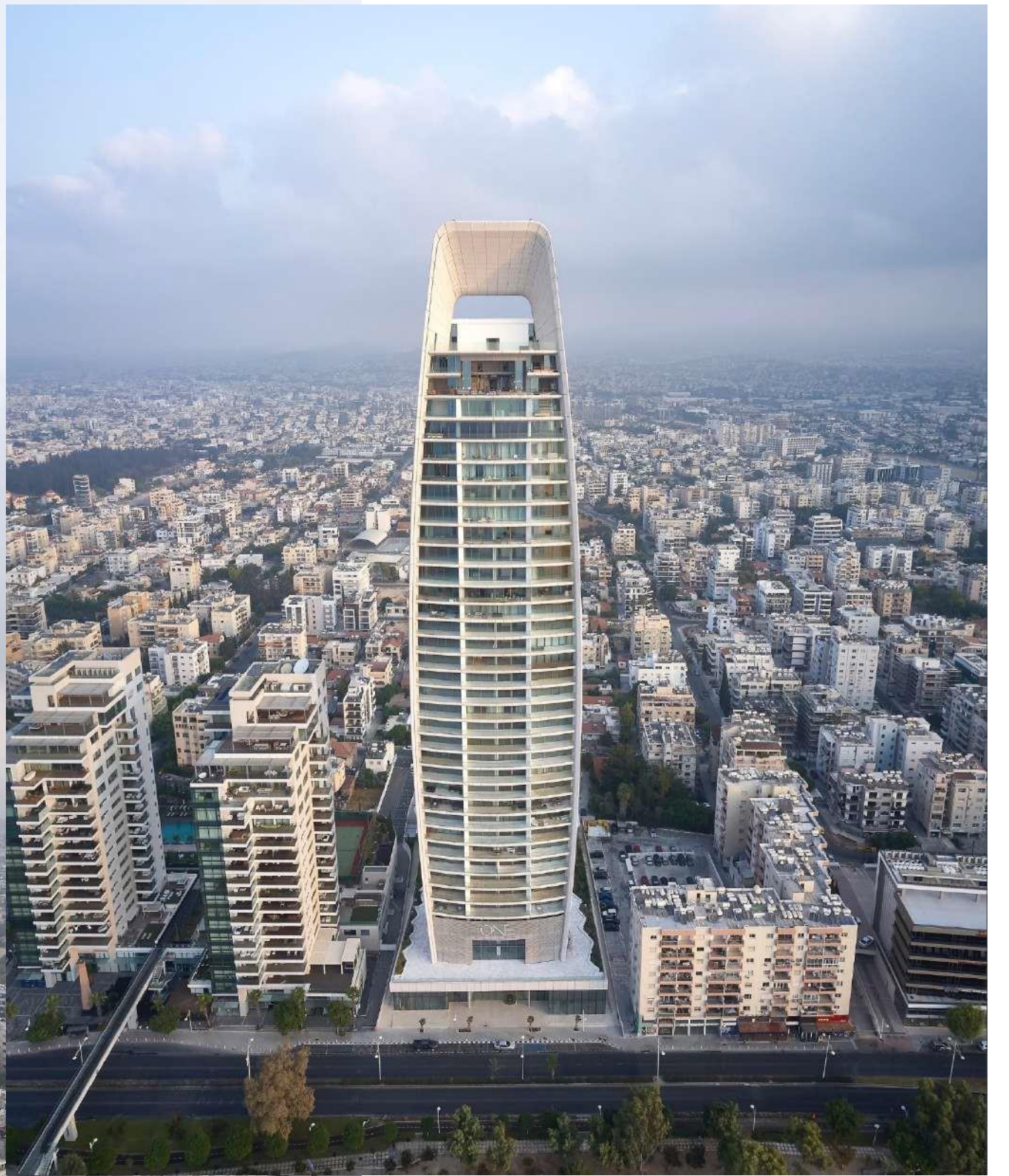
# ONE

## PENTHOUSE

### THE NEW DEFINITION OF LUXURY

ONE is unique. It marks the heart of Limassol. It demonstrates the potential of architecture and design. It marries the sanctuary of home with the spirit of a remarkable hotel. It connects with nature and imbues life with light and space. As an address, an asset, a city retreat and a lifestyle choice, ONE introduces the Mediterranean to a new definition of luxury.







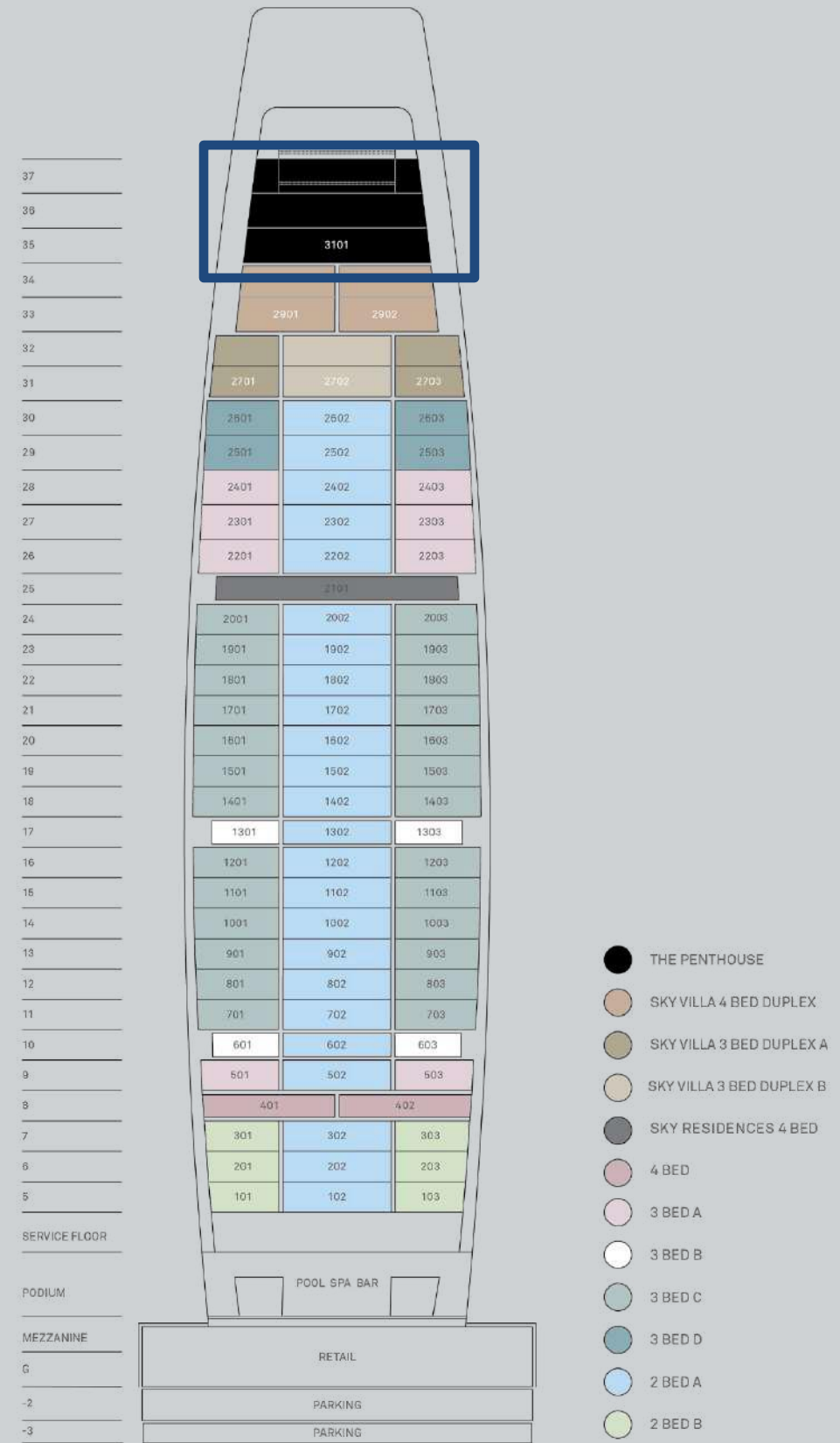
## Table Of Areas ONE Sky Penthouse

Property	Level	Type	Beds	Baths	Cvrd. Area	Cvrd. Veranda	Total Cvrd. Area	Uncvrd. Veranda	Private pool	Deck/pool area	Storage room
3101	35-37	Penthouse	4-5	4	581.00 m <sup>2</sup>	85.00 m <sup>2</sup>	666.00 m <sup>2</sup>	40.00 m <sup>2</sup>	10x4	206.00 m <sup>2</sup>	14.00 m <sup>2</sup>





# ONE



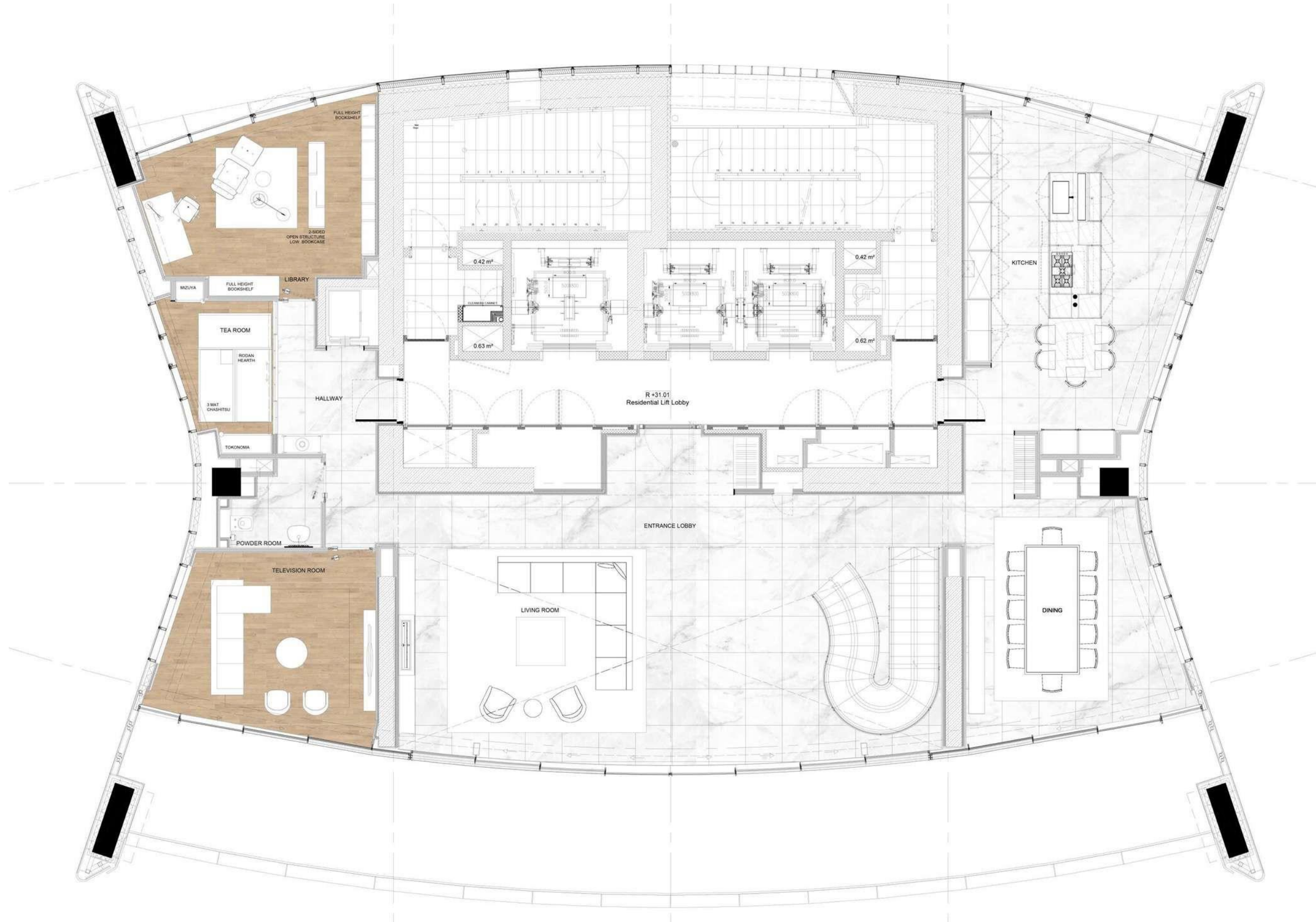




Exclusively occupying 3 levels the penthouse offers the perfect entertaining space and spectacular living quarters that are unrivalled in Cyprus.



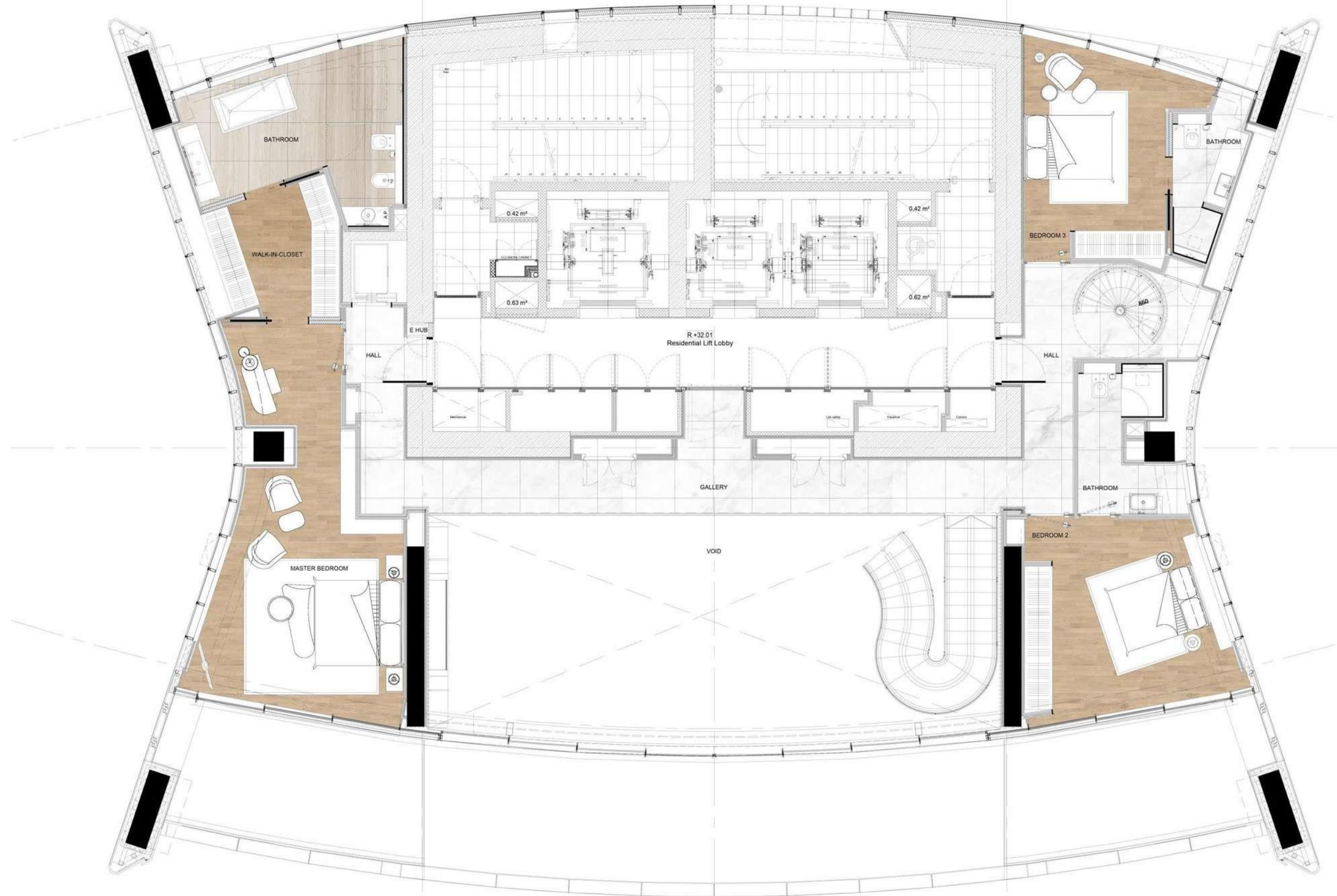
# PAFILIA ONE | SKY PENTHOUSE



Level 35, Penthouse 1<sup>st</sup> level.



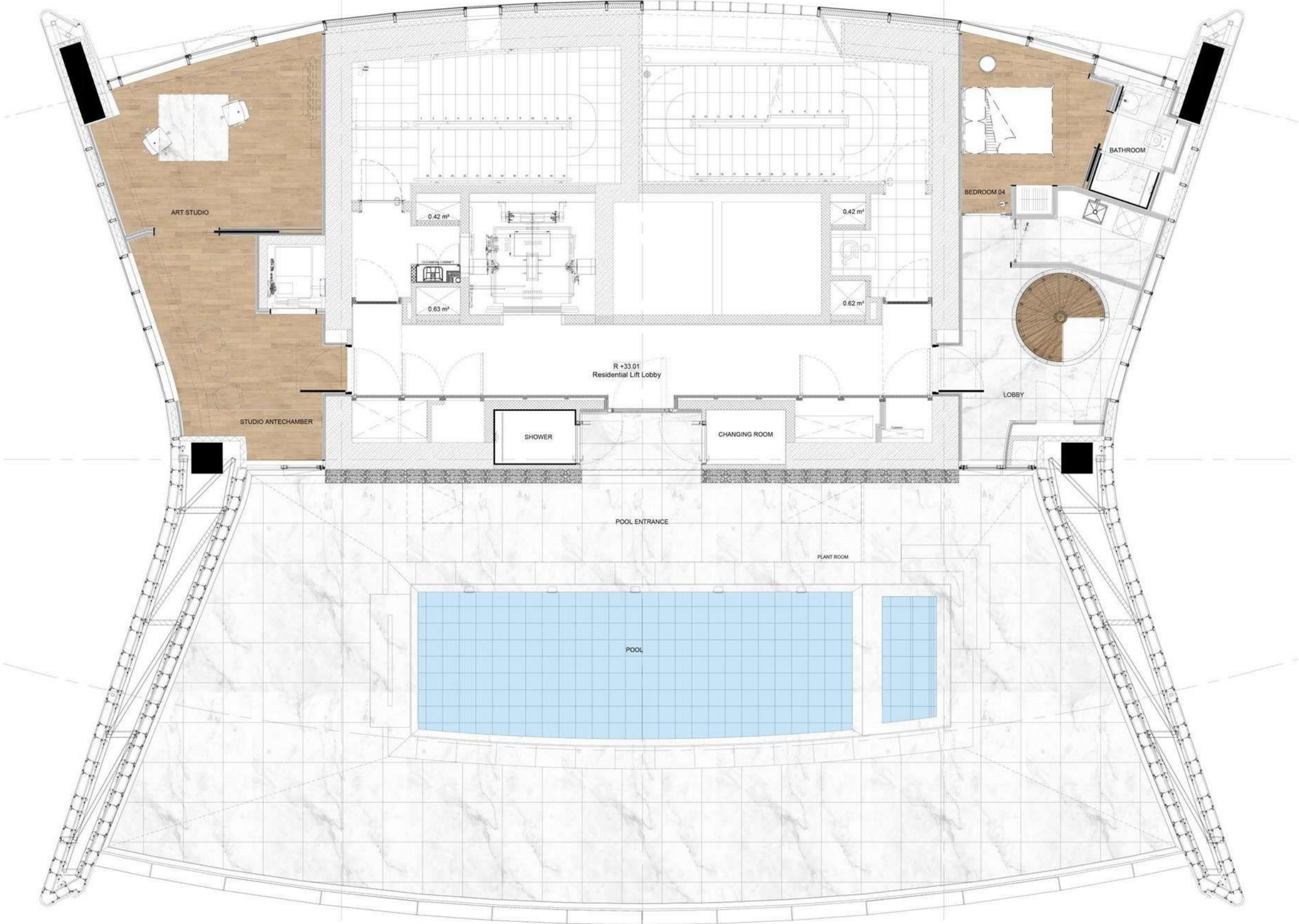
# PAFILIA ONE | SKY PENTHOUSE



Level 36, Penthouse  
2<sup>nd</sup> level.



# PAFILIA ONE | SKY PENTHOUSE



Level 37, Penthouse 3<sup>rd</sup> level.



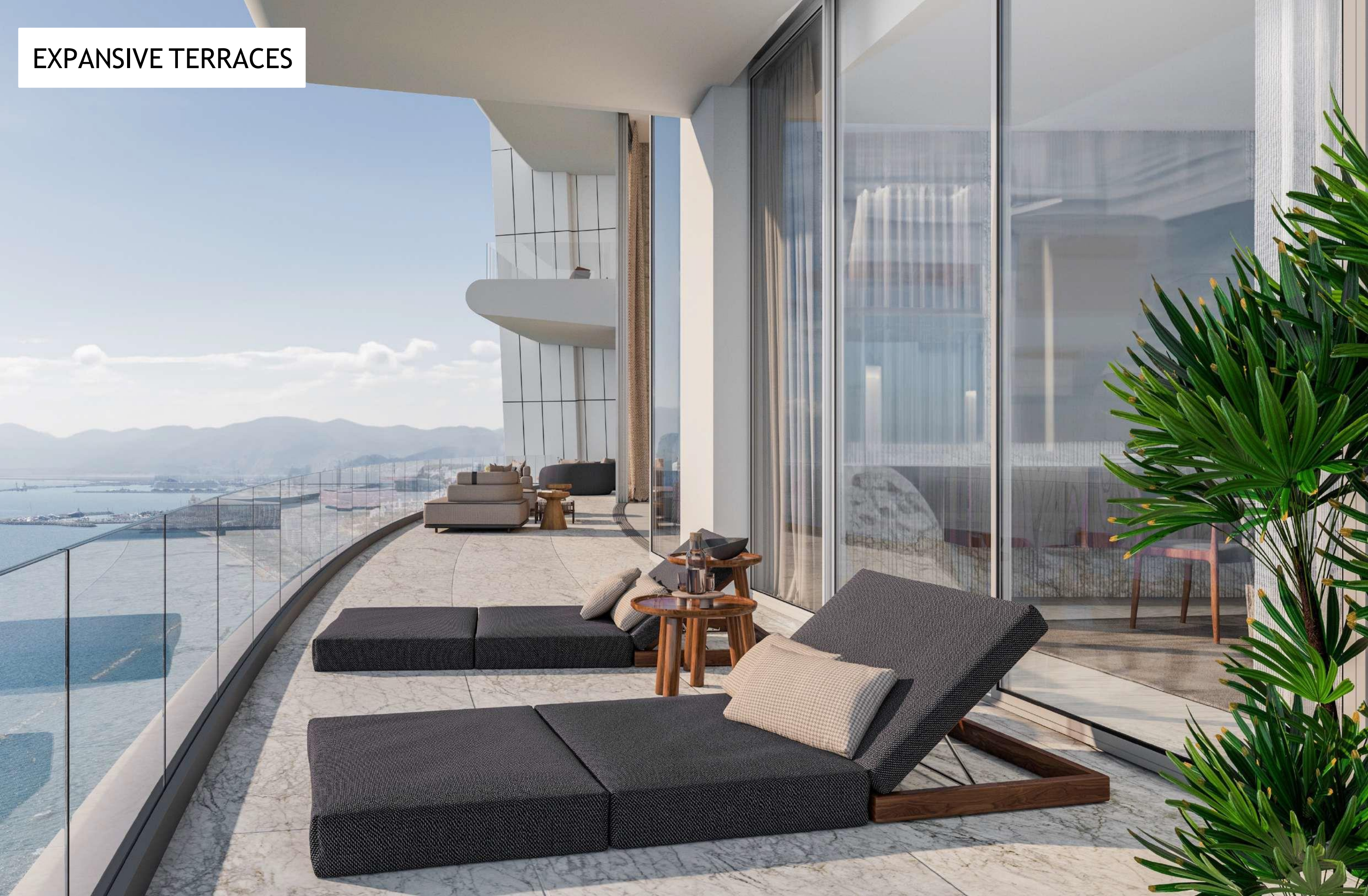


Living area with floor to ceiling windows and curated glass staircase.





EXPANSIVE TERRACES



















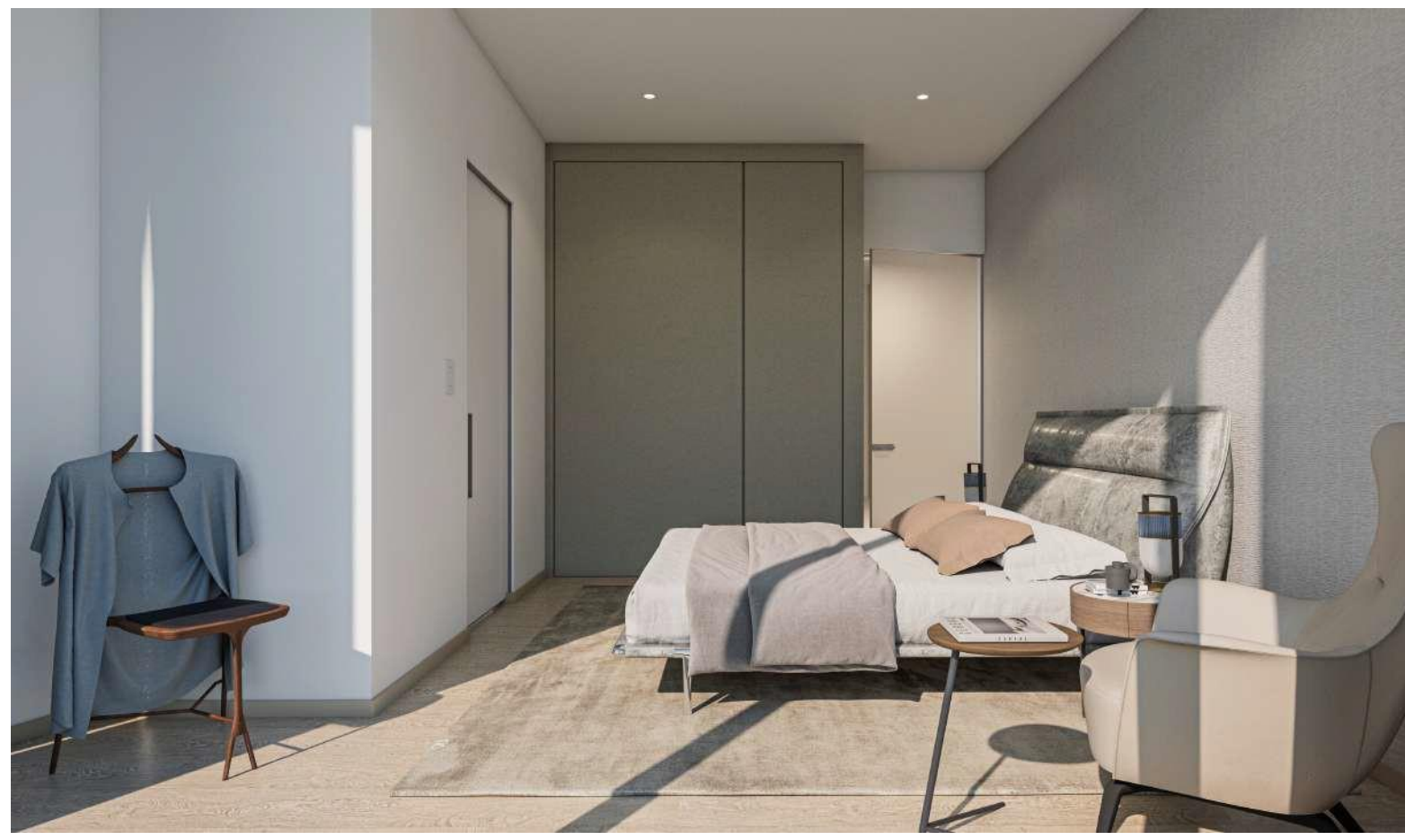
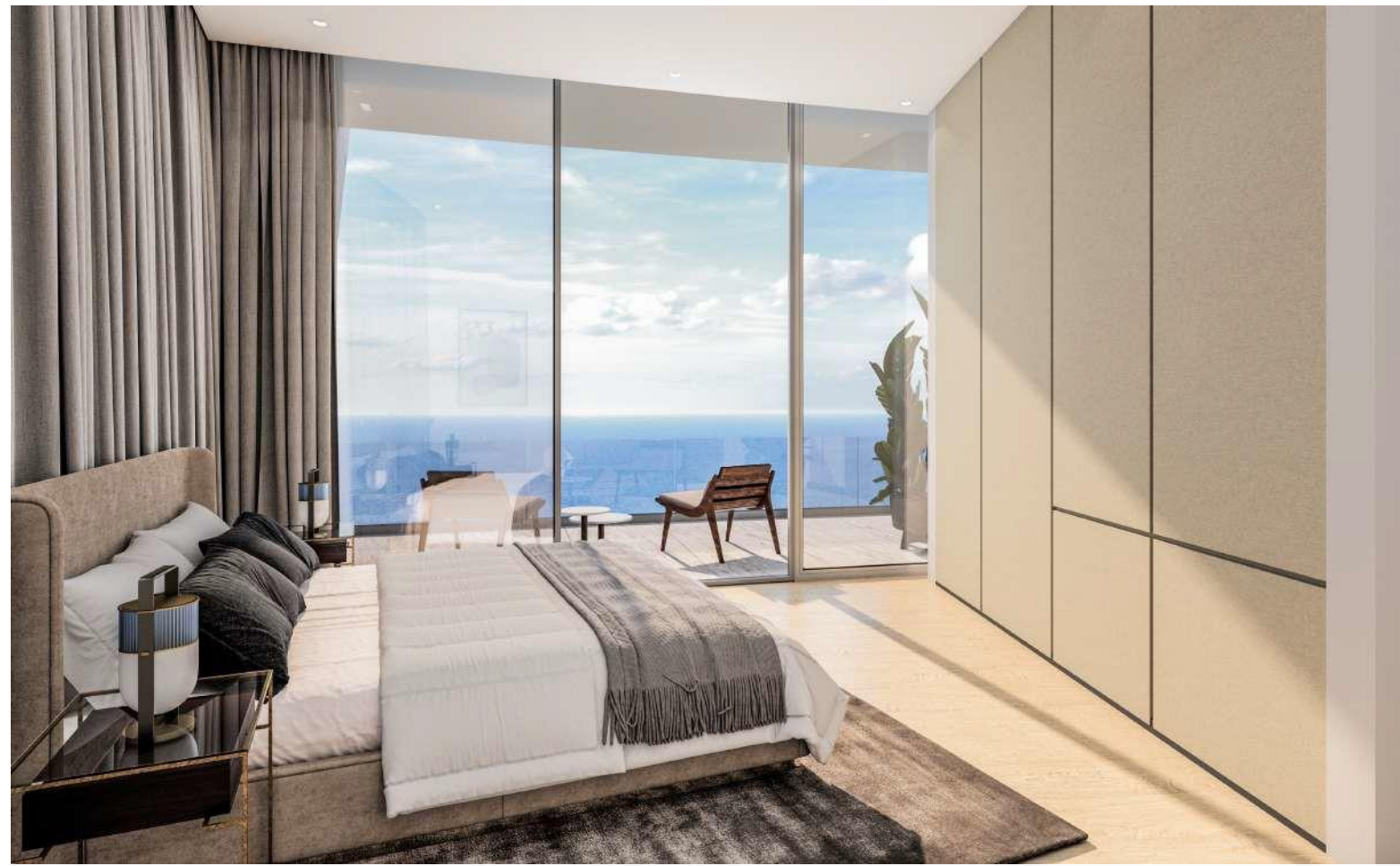
Areliera

Areliera









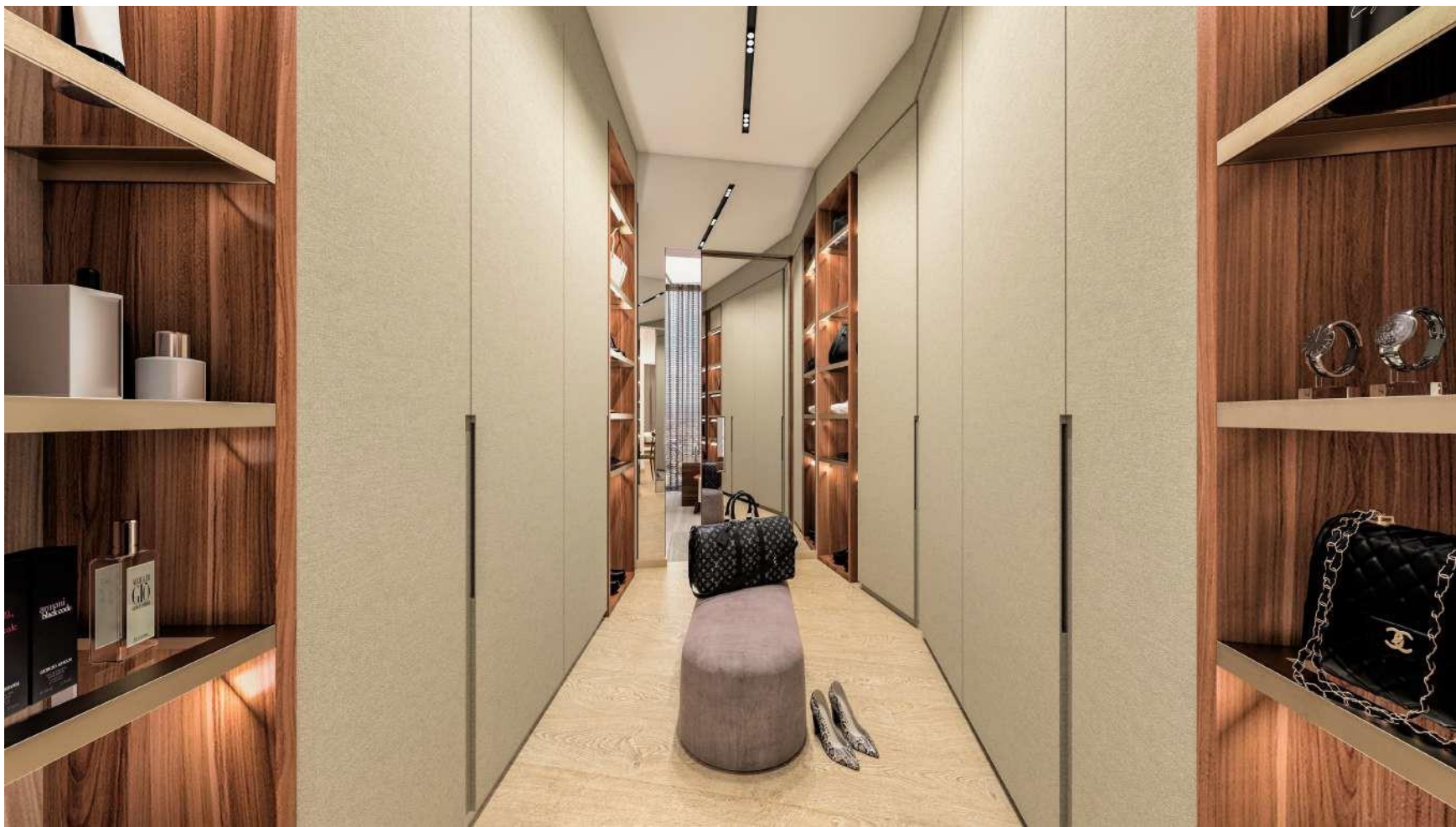
LUXURIOUS AND COMFORTABLE BEDROOMS



# MASTER BEDROOM WITH PRIVATE TERRACE







Master bedroom with large walk-in wardrobe and spa-inspired bathroom.

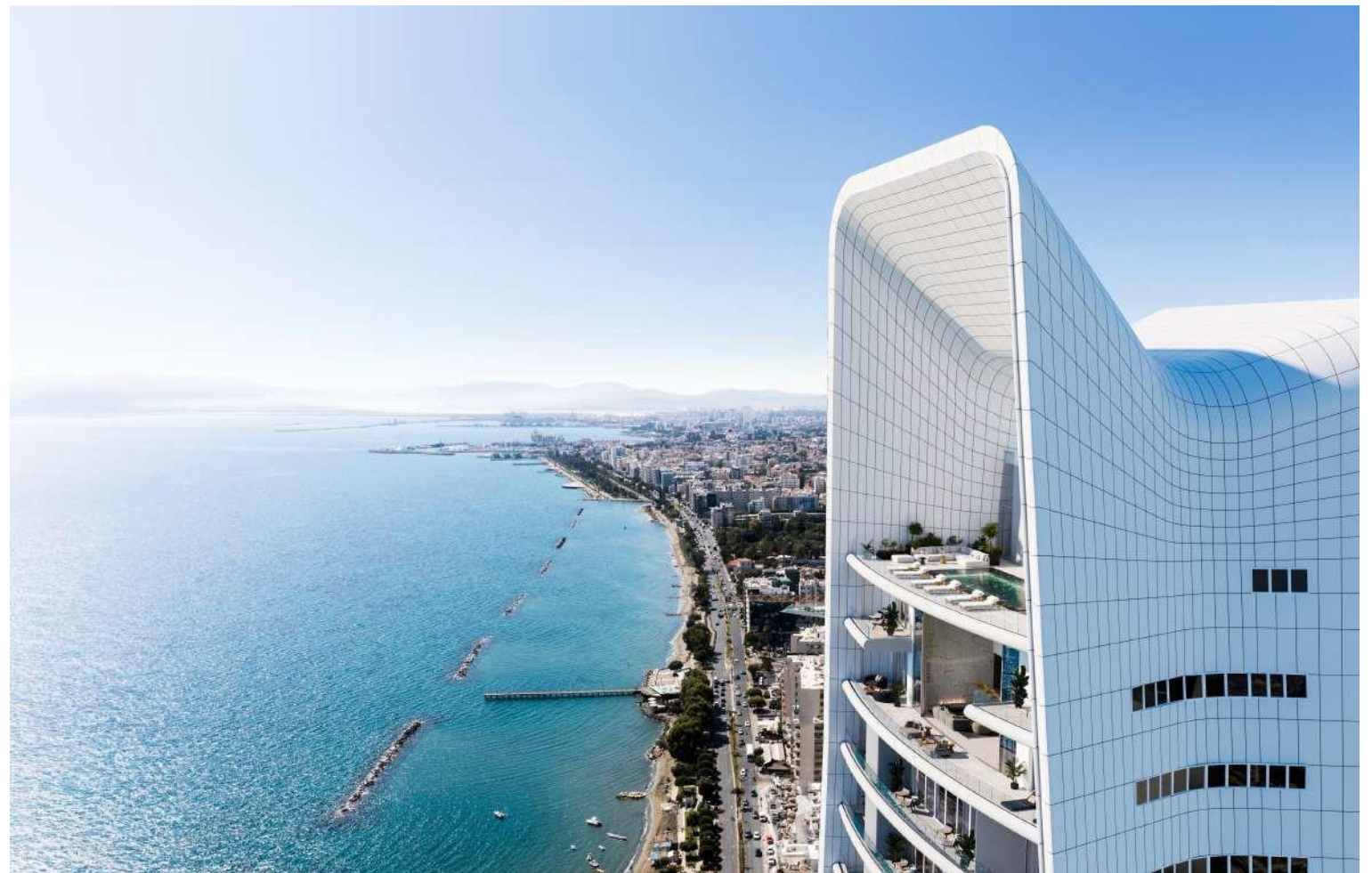
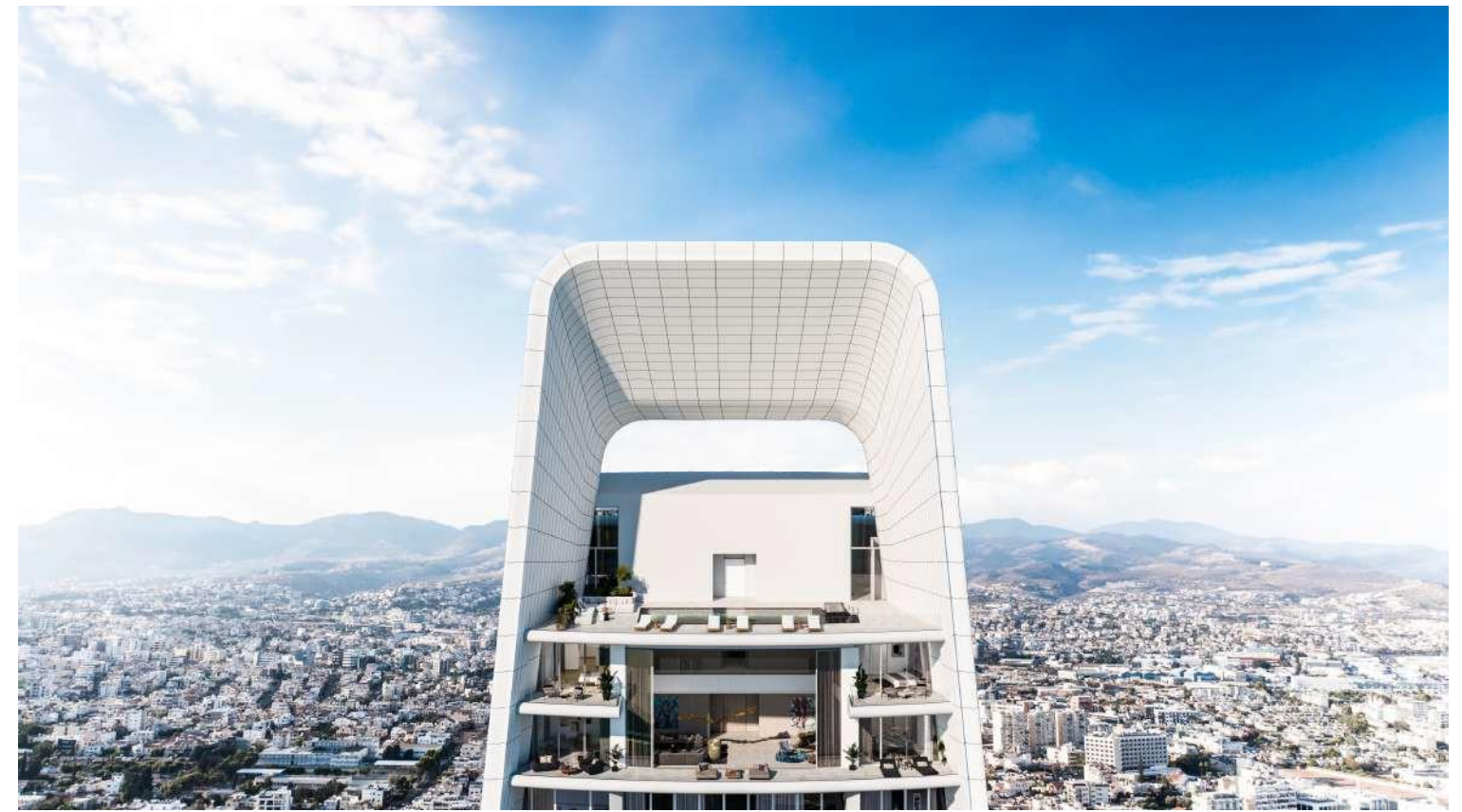




POOL AND JACUZZI ON THE 37<sup>TH</sup> FLOOR











GYM & SAUNA

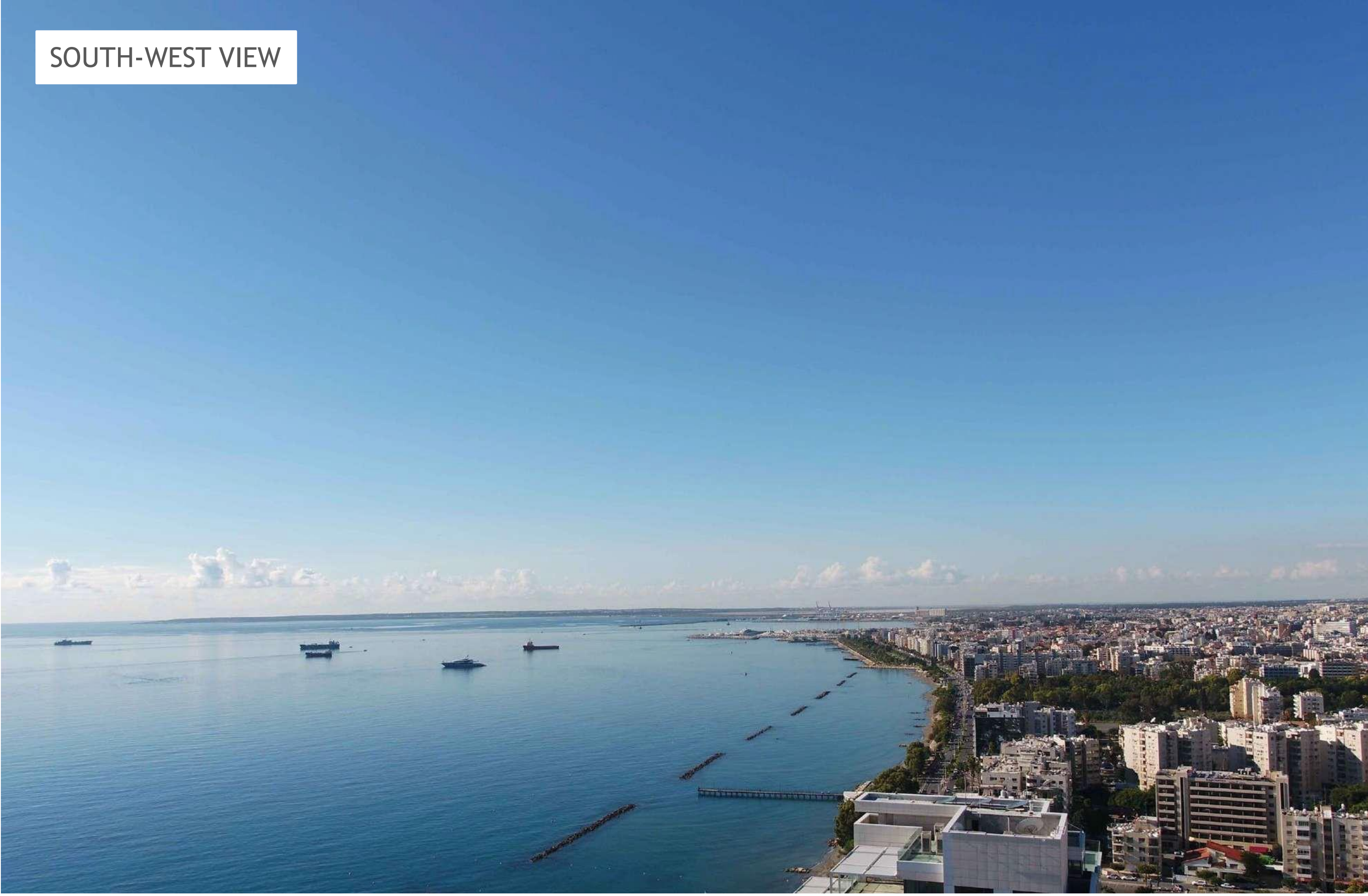


SOUTH VIEW





SOUTH-WEST VIEW





EAST VIEW





NORTH-EAST VIEW





NORTH-EAST VIEW







## PRIME LOCATION

INTERNATIONAL AIRPORTS  
 Larnaca Airport 45 min  
 Paphos Airport 53 min

----- Promenade  
 ..... Beach Path

### PLACES OF INTEREST

1. Limassol Castle
2. Limassol Marina
3. St Raphael Marina
4. Old Port
5. Cathedral
6. City Hall
7. Limassol Nautical Club
8. Watersports Club

### GALLERIES, MUSEUMS, THEATRE

9. Cyprus Theatre Museum
10. Municipal Gardens Theatre
11. Municipal Art Gallery
12. Miho Art Gallery
13. Archaeological Museum
14. Carob Mill Museum
15. Gallery Morfi
16. Rialto Theatre
17. Municipal Gardens
18. Amathus Archeological site

### EDUCATION

19. Foley's Grammar School
20. American Academy School
21. Logos School of English Education
22. Pascal English School
23. The Grammar School
24. Cyprus University of Technology
25. Intercollege Limassol
26. The Cyprus Academy of Art
27. Cyprus Institute of Marketing





# ONE

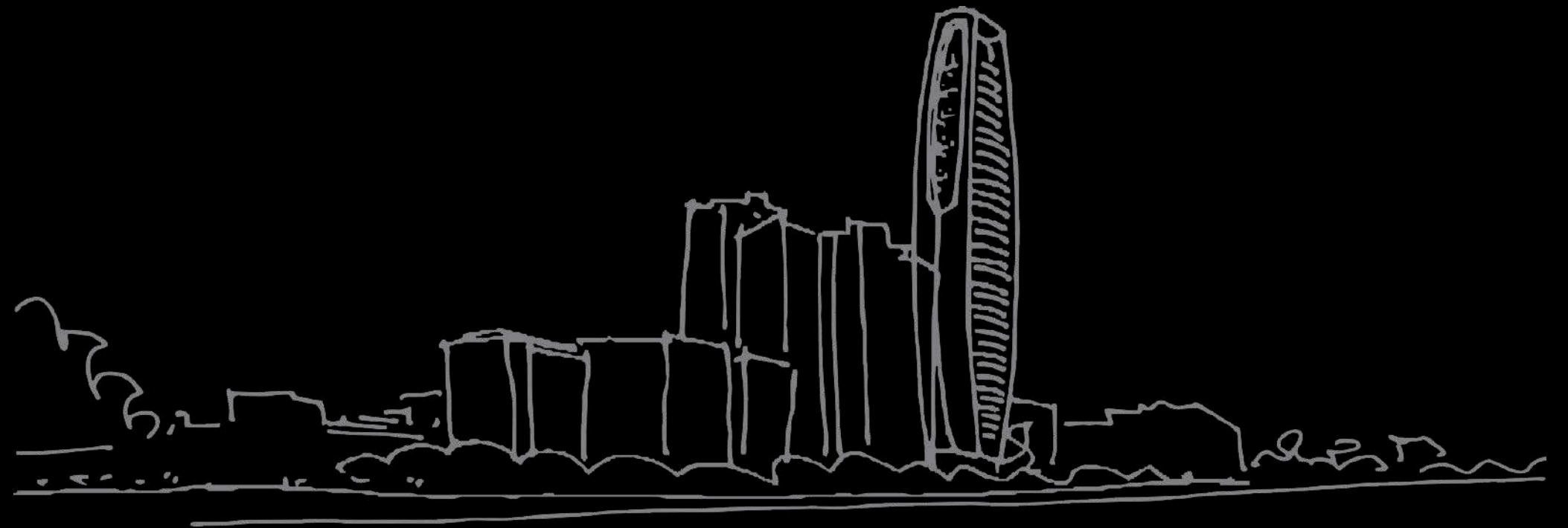
---

# COLLABORATION

## AFFINITY FOR THE EXCEPTIONAL

A collection of the world's most renowned architects, designers and engineers have been brought together to originate ONE. They share an affinity for the exceptional, the unique and the genuine.

The many perspectives that have combined to realise a building of such unrivalled quality are evident in its striking aesthetic, its performance and its breathtaking elegance within the Limassol skyline.



Pafilia

ATKINS

WKK

 HBA

BUROHAPPOLD  
ENGINEERING





## MASTERPLANNER

### ATKINS

Atkins is a name that reverberates throughout the worlds of masterplanning, architecture, landscape and engineering. It is one of the world's largest consultancies, with distinctive public, private, urban and nature projects in its enviable portfolio, including Dubai's Burj Al Arab.

A blend of imagination, pragmatism and holism defines Atkins' approach but, as with ONE, there is no singular element that defines their output. Every solution is a unique response to a lucid vision.

The Atkins team has delivered a concept and a standard that positions ONE as Cyprus' finest residential experience.



## ARCHITECT

### WKK

WKK have taken Atkins' concept forward with peerless design detailing and thoughtful specifications. Their supervision of the entire project ensures that ONE is the purest manifestation of luxury.

Tom Wright, Hakim Khennouchi and Geku Kuruvilla George established WKK in London after working together at Atkins for many years. They are bound by their passion for meaningful design and a belief that, as a creative, one must always experiment, learn and grow.



## INTERIOR DESIGNER

### HBA

The interior design team responsible for the superlative style of ONE is HBA.

Since 1965, HBA has captured and artfully interpreted the essence of the discerning individual's expectations and preferences. Today, some of the world's most luxurious and intriguing hotels, residences and spas feature proudly in HBA's portfolio

The distinctive promise of ONE - to offer residents beautiful and meticulously planned space that combines the best of home and hotel - has been brought to vivid life by HBA.



## ENGINEERING

### BUROHAPPOLD

Engineering consultancy BuroHappold has dedicated its best minds to developing ONE as a living, breathing part of Limassol.

For 40 years, BuroHappold has created living strategies that bridge the gap between science and society. Technical expertise is complemented by innovation, a holistic approach to planning and a passion for the future of the planet.

Their wealth of experience translates into stunning buildings that reverberate within their environment and deliver long-term value. In ONE, BuroHappold's ability to realise cutting-edge yet integrated engineering solutions is showcased perfectly.



# Pafilia

PROPERTY DEVELOPERS

The contents and information contained in this proposal are intended for general marketing purposes only and must not be construed as advice, or being complete and accurate nor be relied upon as such. The photographs of the surrounding views and location may have been digitally enhanced or altered and do not represent actual views or surrounding views. These photographs are indicative only. Fittings and finishes are subject to availability and company's discretion. Prospective purchasers should make and must rely on their own enquiries. This proposal is a guide only and does not constitute an offer or contract. Neither the company nor any of its directors or employees give any representation or warranty as to the reliability of the information contained herein, and shall not be responsible and disclaim all loss, liability, or expense of any nature whatsoever which may be attributable (directly, indirectly or consequentially) to the use of the information provided.